



DCP/DCX

CENTRIFUGAL IMPACTOR



It breaks up medium and fine semolina and plaques of the reduction passages.

The break up action, achieved by impact, increases productivity while improving yields and the degree of water absorption in the flour. The machine is characterised by a flat impeller with three sets of screwed pins to break up the plaques.

The impeller is dynamically balanced and splined to the driving shaft.

The machine can be mounted on the floor or suspended from the ceiling.

A stainless steel version is available on request.

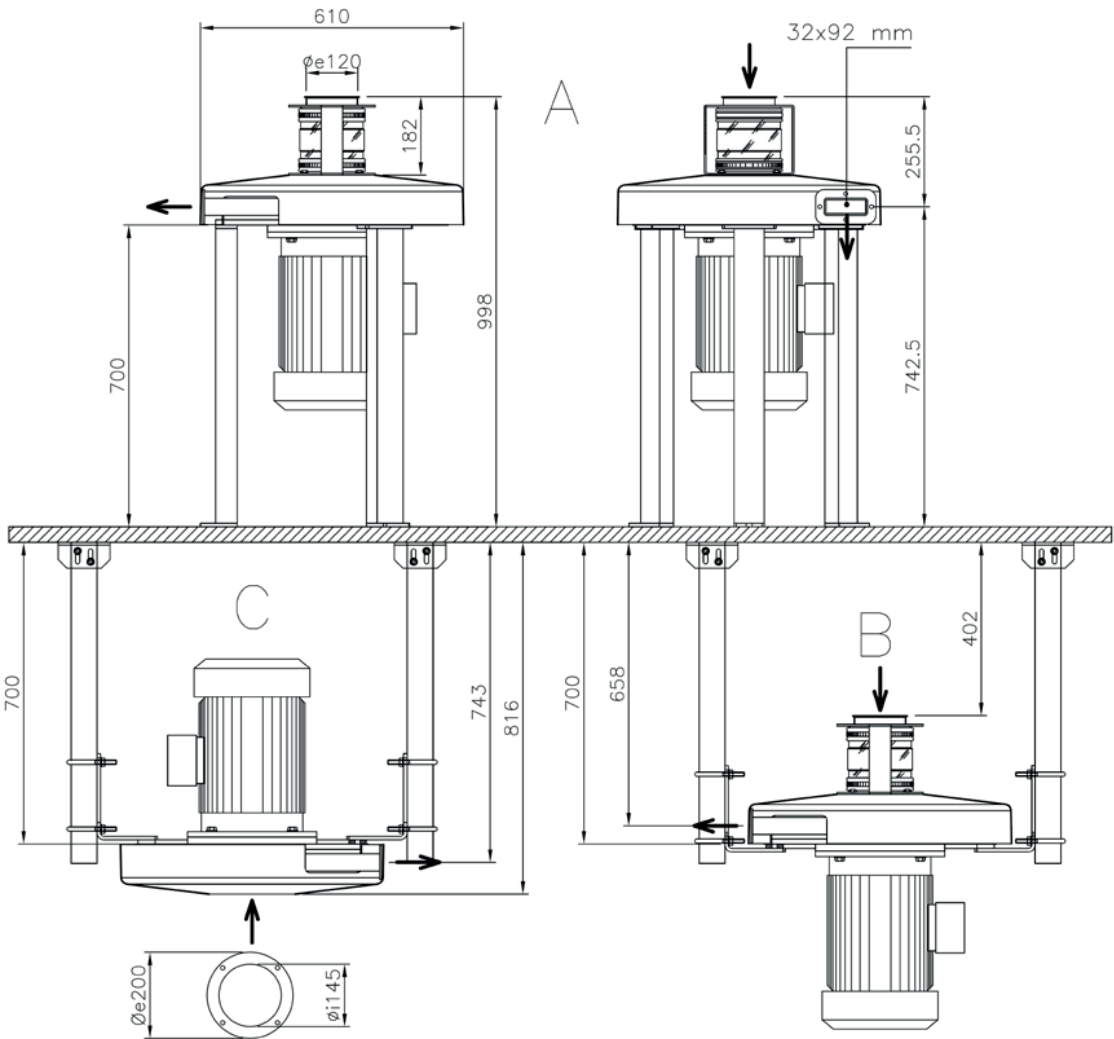


Technical Information

Model	Impeller diameter (mm)	Maximum flow rate (flour) (Kg/h)	Motor power (kW)		Impeller speed (rpm)		Net weight (Kg)
			50 Hz	60 Hz	50 Hz	60 Hz	
DCP/DCX	500	1800	5.5	6.3	2910	3492	123
		3500	7.5	8.6			130
		3900	11	12.6			160

Technical features of the equipment can be modified without any obligation of notice. Data may be not fully in accordance with the market versions

- A → Floor installation
- B → Ceiling installation - motor at bottom
- C → Ceiling installation - motor on top





OCRIM S.p.A. - Via Massarotti, 76 - 26100 Cremona (Italy)



www.ocrim.com