



# DCP/DCI-S

CENTRIFUGAL IMPACTOR



**It breaks up medium and fine semolina and plaques of the reduction passages.**

The break up action, achieved by impact, increases productivity while improving yields and the degree of water absorption in the flour. The machine is characterized by a flat impeller with three sets of screwed pins to break up the plaques.

The impeller is dynamically balanced and splined to the driving shaft.

The machine can be mounted on the floor or suspended from the ceiling.

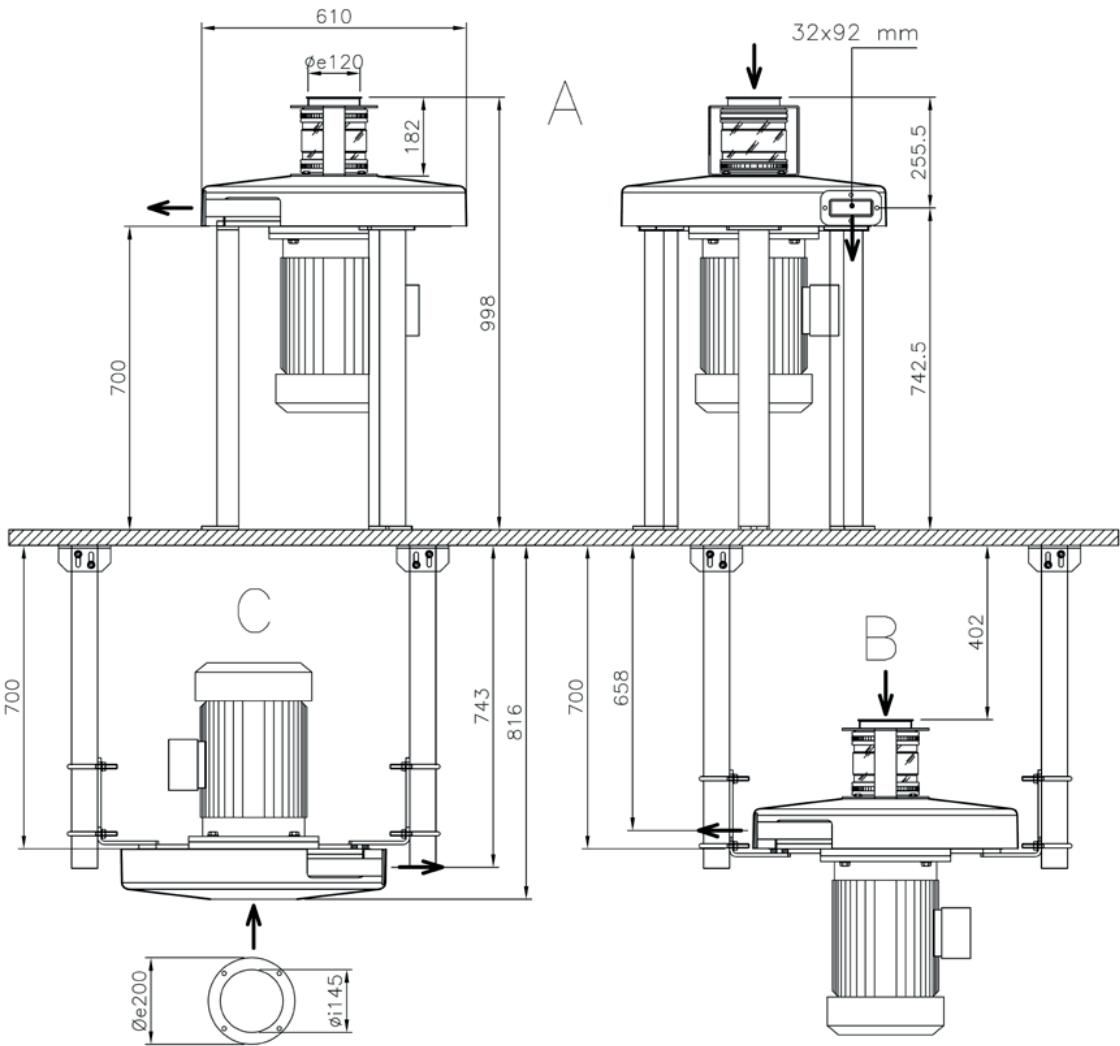
A stainless steel version is available on request.

Technical information

Model	Impeller diameter (mm)	Maximum flow rate (flour) (Kg/h)	Motor power (kW)		Impeller speed (rpm)		Net weight (Kg)	Shipping volume (m³)
			50 Hz	60 Hz	50 Hz	60 Hz		
DCP	500	900	4,0	4,55	2950	3550	180	0,54
		1800	5,5	6,3	2950	3545	188	
		3500	7,5	8,6	2950	3550	195	
		4800	11	12,6	2955	3555	209	
DCI-S	500	1800	5,5	6,3	2910	3492	123	0,50
		3500	7,5	8,6			130	
		3900	11	12,5			160	
			15	17,5			175	

Technical features of the equipment can be modified without any obligation of notice. Data may be not fully in accordance with the market versions.

- A → Floor installation
- B → Ceiling installation – motor on botto,
- C → Ceiling installation – motor on top





OCRIM S.p.A. - Via Massarotti, 76 - 26100 Cremona (Italy)



[www.ocrim.com](http://www.ocrim.com)